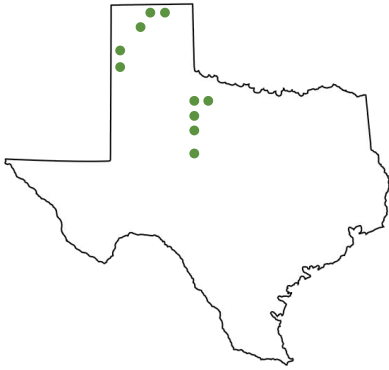


# Texas Wheat Facts

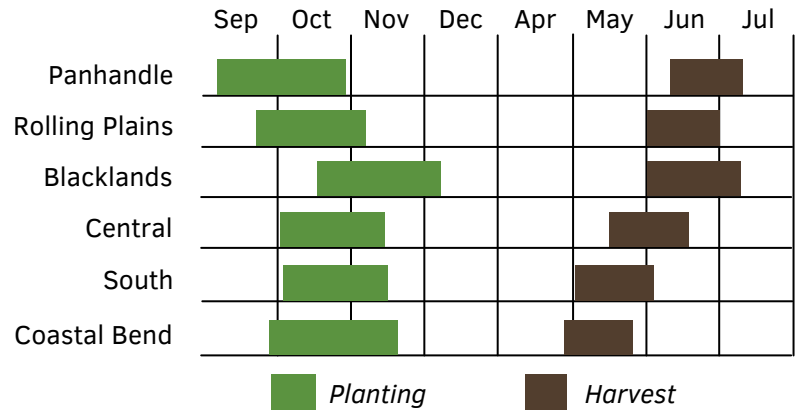
## TOP 10 LARGEST WHEAT PRODUCING COUNTIES

1. Deaf Smith
2. Knox
3. Ochiltree
4. Haskell
5. Hansford
6. Runnels
7. Jones
8. Baylor
9. Moore
10. Parmer



(Source: USDA NASS County Estimates Quick Data, 2020 Wheat Production in Bushels)

## TEXAS WHEAT PLANTING AND HARVEST



**5 MILLION**

average number of wheat acres planted in Texas

**#9**

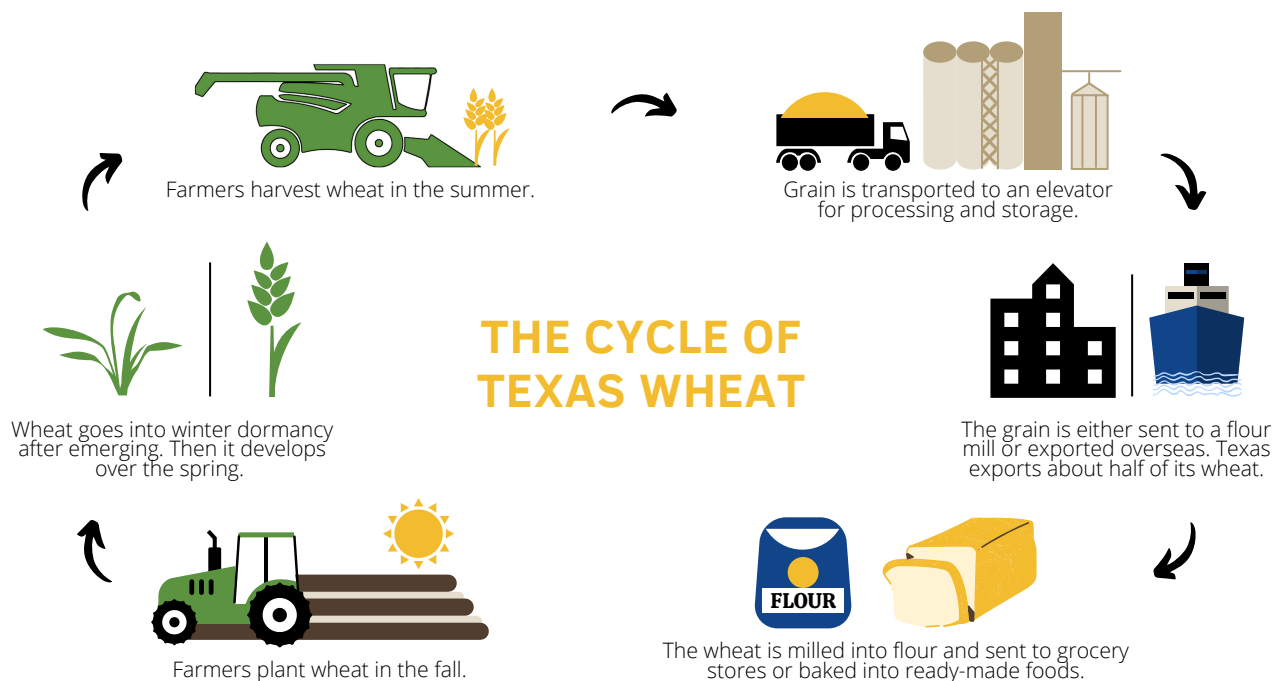
where Texas ranks out of all 50 states for wheat production

**50%**

amount of Texas wheat planted acres grazed out by cattle

**65 MILLION**

average number of bushels of wheat produced in Texas



There are six classes of wheat grown in the U.S. In Texas, 85% is hard red winter wheat, 10% is soft red winter wheat and 5% falls into other classes, including hard red spring and white wheat.

Each class has its own purpose. Hard red winter wheat is typically used for bread, while soft red winter wheat is mostly used for crackers and cookies.