



Texas
Wheat

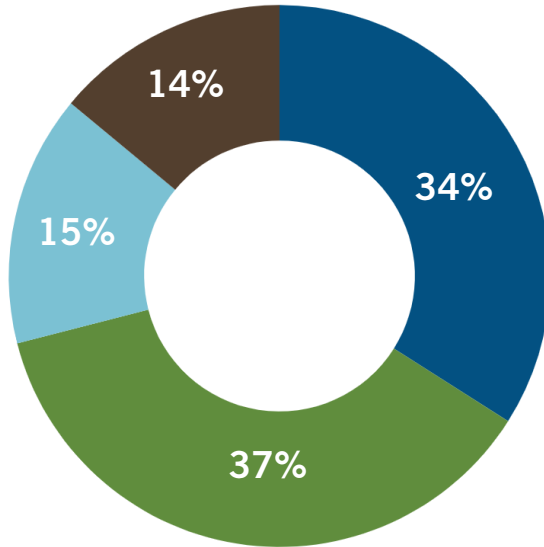
Annual Report
2025-2026



Guided by **GROWERS.**
Driven by **PURPOSE.**

FARMER FUNDED. FUTURE FOCUSED.

FY26 BUDGET ALLOCATION



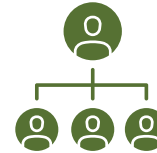
PROGRAMS & IMPACT

Policy Solutions

H.R.1 included key improvements and a



15% INCREASE
IN REFERENCE PRICE



SDRP provided

\$184+ million

to Texas wheat producers

Top priorities include:

**CROP INSURANCE,
FINANCIAL SUPPORT,
NUTRITION POLICY
& FARM BILL AUTHORIZATION**

Research & Innovation



16

*annual projects
funded*

\$130,000

*used to tackle emerging
needs throughout the year*

13.2% INCREASE

in research trials planted for 2026



Market Expansion

Three purchase commitments of



**MORE THAN
1 billion bushels**

over the next 5 years

Hosted a trade team from

EAST AFRICA

leading to the sale of

184,000 bu.

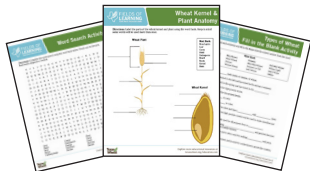
Food for Progress donation



LED TO

4 *purchases
in Colombia*

Education & Outreach



Launched the Fields of Learning
curriculum with

29 DOWNLOADS

in the first 2 months

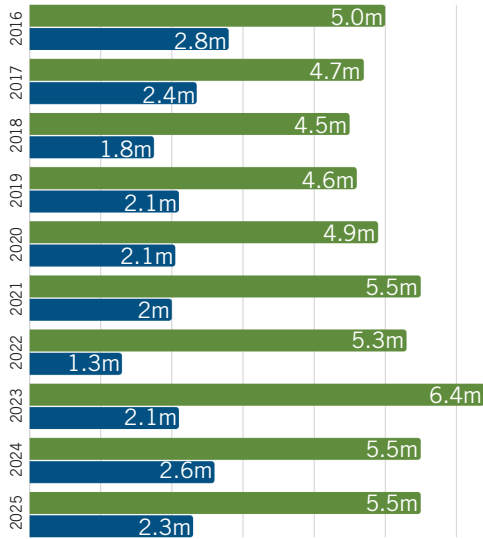
Engaged with

2,500+ STUDENTS

& 50+ TEACHERS

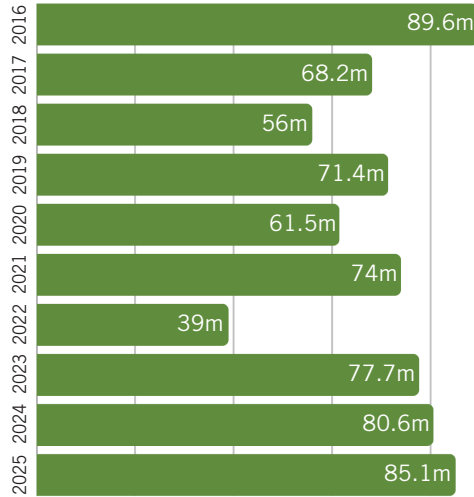
CROP PRODUCTION TRENDS

PLANTED & HARVESTED ACRES



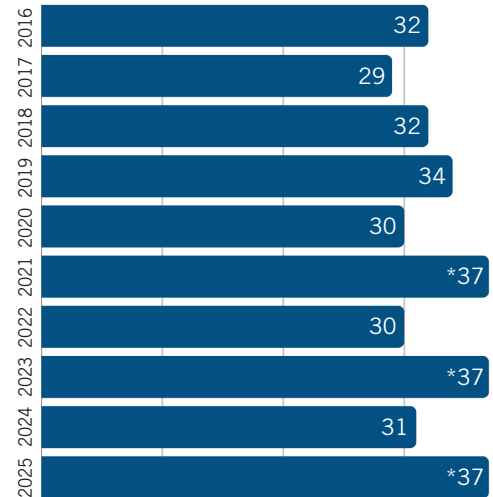
■ Planted Acres
 ■ Harvested Acres

GRAIN PRODUCTION (BUSHEL)



10 YEAR AVG
 70.3m bushels

YIELD (BUSHEL PER ACRE)



*Statewide record yield.

10 YEAR AVG
 33 bushels per acre

10 YEAR AVG

Planted = 5.2 million acres
 Harvested = 2.1 million acres

USDA NASS estimates 2026 winter wheat production at
 47.6 million bushels with an average yield of
 28 bushels per acre on 1.7 million acres.

RESEARCH & INNOVATION

34% of annual budget.

Funded **16 projects** in the FY26 cycle.

Utilized **\$130,000 for special projects** designed to tackle emerging needs during the year.

Saw a **13.2% increase** in research trials planted in 2026.

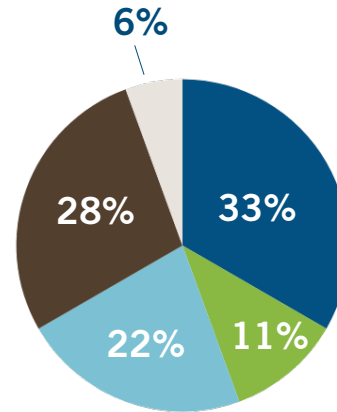
Record-Setting Research Investment

More than \$420,000 was allocated to new research funding for the 2025-26 cycle. This record-setting amount provided strong support for key research led by Texas A&M AgriLife, including ongoing wheat breeding and genetics work. These programs focus on providing enhanced yields, disease and pest resistance and overall performance for farmers through the development of Texas-based genetics. The remaining dollars were allocated to research projects aiming to enhance marketability, expand varietal knowledge, analyze inputs and optimize production.

\$420,000 IN RESEARCH FUNDING

to find answers to the biggest challenges.

PROGRAMS & IMPACT



Research Priority Areas

- Wheat Breeding
- End-Use Quality
- Disease & Pest
- Regional Agronomy
- Silage

Improving Small Grain Silage Production

The implementation of the new Small Grain Silage Assessment allows for more investment in research designed to improve silage production and profitability. In early 2026, the board approved funding for the purchase of a silage header for Texas A&M AgriLife Research and a research project focused on wheat and triticale silage. This work is evaluating how maturity stage and cut height impact yield, nutrient value and fiber digestibility. Providing clear, field-tested guidance to improve quality and get the most value out of every acre remains a priority for the board's research investment.

Partnerships Across State Lines

In addition to funding a wide range of Texas-based research projects, the board reached across state lines to build and invest in coalitions with other key partners in the wheat industry. These partnerships strengthen and enhance the work being done at home. New ventures include joining the Wheat Genetics Research Center, partnering with other state wheat organizations to secure a USDA grant focused on drought resilience and investing in the next steps for advancing wheat technology.



\$3.3 million

CONTRIBUTED TO RESEARCH

in the past 10 years.

65+

PROJECTS FUNDED

in the past 5 years.

FY26 Research Projects

1. Wheat Cultivar Development and Genetic Research for South, Central and Northeast Texas
2. Texas Winter Wheat Breeding Program: High Plains and Rolling Plains
3. Enhancing Texas Wheat Marketability Through End-Use Quality Assessment and Knowledge Transfer
4. Improve Multiple Stress Tolerances through Genomic-Assisted Breeding and Doubled Haploid Development
5. Statewide Extension and Support of Texas Wheat Producers
6. Development of AI-GBB for Enhanced and Accelerated Development of Conventional and Hybrid Varieties
7. Yield-Quality Tradeoffs in Silages Across Maturity Stages and Harvest Cut Heights
8. Characterization and the Assessment of the Economic Impact of Bacterial Diseases
9. Evaluation of Critical Inputs to Improve the Profitability of SRW Wheat in Northeast Texas
10. Applied Wheat Research and Extension Programming to Optimize Production in West Central Texas
11. Developing RNAi Based Pesticide for Greenbug Management
12. Texas High Plains Uniform Wheat Variety Trials
13. Developing an Integrated Pest Management Plan for Hessian Fly
14. Support of Texas Wheat Extension Efforts in the Rolling Plains of Texas
15. Identifying New Sources of Biological Nitrification Inhibition for Texas Winter Wheat
16. Breeding Texas SRW Wheat for Long-Term Hessian Fly and Fusarium Head Blight Resistance

MARKET EXPANSION

37% of annual budget.

Secured **3 purchase commitments** of more than 1 billion bushels over 5 years.

Fulfilled a Food for Progress donation that led to **4 additional purchases** in Columbia.

Hosted a trade team visit from East Africa that led to real-world sales of **184,000 bushels**.

International Agreements

In 2025, U.S. Wheat Associates secured long-term purchase commitments with buyers in Indonesia, Taiwan and Bangladesh, totaling more than 1.1 billion bushels of U.S. wheat and billions in projected dollar value. These commitments lock in consistent export volume across both growing and established markets, delivering a strong return on farmer investments through greater market stability and long-term revenue growth.



Bangladesh

25.7 million bushels over 5 years



Taiwan

132.3 million bushels over 3 years

Indonesia

36.7 million bushels over 5 years



East Africa Trade Team

A September 2025 trade team visit from East Africa's largest milling company resulted in the purchase of 184,000 bushels of U.S. hard red winter wheat. By highlighting the reliability, transparency and quality of the U.S. system, the visit built buyer confidence and made U.S. wheat more competitive in a region dominated by Russian supply, showing how direct relationships drive both immediate and future sales.



Food for Progress

Through the Food for Progress program, U.S. wheat successfully entered the Colombian market, long dominated by Canadian supply, through a monetization project of 735,000 bushels of U.S. HRW wheat and 492,000 bushels of U.S. HRS wheat. This donation shipment was followed by four additional commercial purchases. These follow-up sales highlight how strategic investment and strong relationships lead to steady export demand and new revenue opportunities for U.S. wheat farmers.



EDUCATION & OUTREACH

15% of annual budget.

*Launched Fields of Learning program with **29 curriculum downloads** in the first 2 months.*

*Reached **2,500+ students** at 4-H events.*

*Engaged with **50+ teachers** at an educator conference.*

Fields of Learning

In 2025, the board launched the Fields of Learning program, an education initiative designed to strengthen long-term consumer demand and public support for the state's wheat industry. The program offers free, ready-to-use materials for teachers, extension leaders and parents with the goal of developing informed consumers who understand the value of wheat.

Download the lessons and resources at texaswheat.org/education.



Wheat Foods Council

In 2026, the Wheat Foods Council adopted a farmer-led communications strategy focused on increasing domestic demand for wheat. By elevating producer voices and connecting them directly with key consumer audiences, the organization aims to improve trust, transparency and understanding of modern wheat production. This approach reinforces wheat's value as a staple ingredient and helps protect and grow demand for U.S. wheat, delivering a direct return to producers through stronger market preference.



Home Baking Association

Texas Wheat partnered with the Home Baking Association at an educator conference in July 2025 to connect with family and consumer sciences educators. The Fields of Learning program from Texas Wheat and the Baker's Dozens Labs from HBA equip teachers to deliver practical nutrition education and wheat-based cooking and baking skills to high school students.

These efforts extend the industry's reach into classrooms that directly influence food choices, helping cultivate lifelong wheat consumers and reinforcing demand at the household level.

H.R. 1: “Big, Beautiful Bill Act”

The most significant policy changes for wheat growers during the 2025–26 fiscal year came through the reconciliation process.

H.R. 1 included a 15% increase in the PLC wheat reference price, improvements to ARC-CO and stronger crop insurance support. Those crop insurance changes made coverage more affordable for the 2026 crop year by increasing subsidies for basic and optional units and by improving support for area-wide options such as SCO and ECO.

Ad Hoc Disaster Assistance

Due to ongoing economic pressures, disaster assistance remained an important focus throughout the year. The Supplemental Disaster Relief Program (SDRP) opened in summer 2025 and continued well into 2026, providing more than \$184 million to Texas farmers with wheat or annual forage losses.

Additional USDA support was also secured through the Farmers Bridge Assistance Program, with payments beginning in February 2026.

Emerging Issues

The association also stayed engaged on issues affecting how wheat is viewed and valued. We continued to defend the nutritional role of wheat in the diet at both the federal and state levels, including during the release of updated dietary guidance.

At the same time, ongoing financial pressure on producers led to additional state assistance through the Texas Department of Agriculture’s expanded AgPro farmer grant program, which began accepting applications in April 2026.

Topline Policy Efforts



RECENT WINS

Greatly improve standing farm safety net programs

Enhance crop insurance affordability



ONGOING PRIORITIES

Improve ad hoc assistance for grazed wheat

Improve crop insurance quality adjustments for wheat

Protect the nutritional reputation of wheat products

**WE KNOW THE
PROGRAM,
BECAUSE WE
INVENTED IT.**



**Protect annual forage crops, including
wheat, from a lack of precipitation.**

You may be eligible for USDA coverage in addition
to your MPCl policy.

**Annual Forage Rainfall Insurance
SIGN UP DEADLINE: JULY 15**

Larry Schickedanz
www.bacrop.com
806.898.8930

BUNGE

**Local Roots,
Global Impact**



Bunge and Viterra have combined to create the premier agribusiness solutions company. We are committed to supporting our local communities as we sustainably deliver essential food, feed and fuel to the world.

For wheat handling, contact 817.916.7280
425 S Fairmount, Saginaw, TX 76179

Learn more at [bunge.com](https://www.bunge.com) | [in](#) [@](#) [f](#)

Agriculture is moving
faster and faster...

You need an agency that can
keep up.



LIVESTOCK PRICE
INSURANCE



RAINFALL
INSURANCE



MPCI / HAIL
INSURANCE



FSA PROGRAM
ASSISTANCE

Contact Us

254-582-3888 | cropandrange.com

PLATINUM INDUSTRY PARTNERS

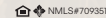


Your Land. Your Legacy. *Let's Grow It Together.*

From seed to harvest, Plains Land Bank is proud to support the wheat producers who feed the world. With a deep understanding of the land we share and the evolving demands of agriculture, we deliver financing designed to move your operation forward today and for the next generation.

Visit plainslandbank.com to learn more.

Amarillo | Pampa | Perryton | Plainview



GOLD INDUSTRY PARTNERS



KTFB
Texas Farm & Ranch Radio

A radio station **for** Texas farmers and ranchers **by** Texas farmers and ranchers

Download the **KTFB app to listen!**



Scan if you have an **iPhone**



Scan if you have an **Android**



WE MOVE WITH YOU.

Proudly partnering with American producers for over 175 years to keep agriculture moving across the nation and worldwide.

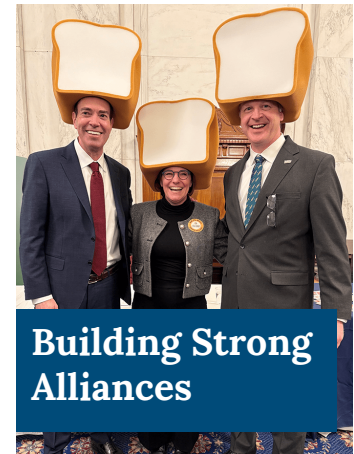


SILVER INDUSTRY PARTNERS



Farmer Driven Influence

Join the Texas Wheat Producers Association to stand with fellow growers shaping the future of the wheat and agriculture industries. Member benefits include:



Scan the QR code to learn more and join the association.

Membership includes options for farmers, academics, companies and organizations.

YOUR WHEAT. *OUR MISSION.*

BOARD OF DIRECTORS



Jody Bellah
Throckmorton



Scott Born
Ferris



Collin Bowers
Spearman



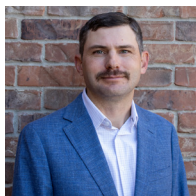
Bryan Clift
Stratford



Chet Creel
Newcastle



Ken Davis
Grandview



Landon Friemel
Wildorado



Gary Murphy
Dawson



Tyler Norman
Howe



Cody Pruser
Winters



Jason Schickedanz
Perryton



Ben Scholz
Lavon



Corby Shadid
Panhandle



Freddie Streit
Vernon



Eddie Womack
Tulia

STAFF

Steelee Fischbacher
Executive Director

Kimberly Clark
Director of Outreach

Bailey Sipes
Director of Producer Relations

CONTACT

5405 W I-40
Amarillo, TX 79106

(806) 352-2191

info@texaswheat.org

texaswheat.org

[@texaswheat](https://www.instagram.com/texaswheat)



5405 West Interstate 40
Amarillo, TX 79106